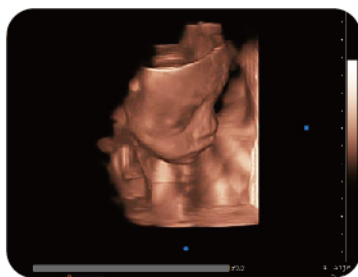




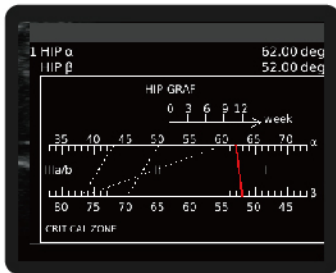
# QBit 5





## • HD 3D ( free hand 3D ) - optional

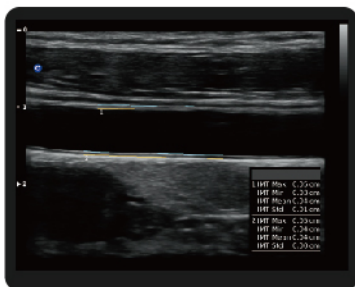
- Innovative scan method;
- Easy control;
- Variable adjustment: chroma, rotation, reconstruction, offline edit;
- No additional probe ,economy
- Upgradable



## • HIP Graf

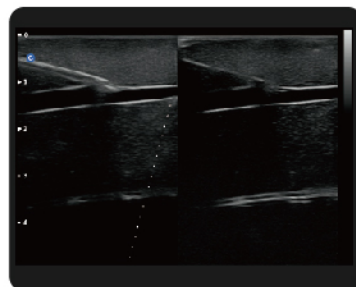
Use a graph for hip orthotics diagnosis, help the doctor to give a more easier and more accurate diagnosis during the pediatric hip scanning. Different angle indicate different level of hip deformity, which is more easier and obvious to see with the aid of the graph. (I, II, D, IIIa, IIIb).

## • Auto IMT Function



Automatically traces the intima, and measures the thickness of the intima. This allows you to measure the intima faster, more easily and more accurately.

## • Super Needle



With Super Needle, clinicians can see needle inside tissue more clearly during medical procedures. Needle angle up to  $\pm 30^\circ$ .



# Advanced Technologies

## • X-contrast

- The QBit allows one-touch user-adjusted contrast resolution based upon differences in tissue density.
- Enhance, Normal, and Suppress settings increase or decrease contrast resolution, based on the tissue type and user preference.



Enhance

Normal

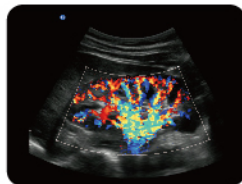
Suppress

## • Q-flow

- This adaptive color detection technology can automatically adjust the assessment of color signal and noise according to different tissues.
- As a result, color sensitivity of low-velocity flow is significantly enhanced.



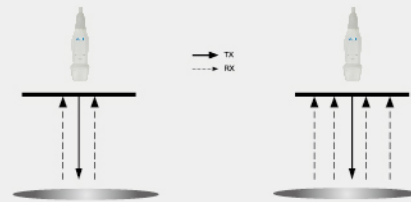
Q-Flow OFF



Q-Flow ON

## • Q-beam

- Compared to the traditional dual-beam former on most ultrasound machines, the QBit uses quad-beam technology for ultrasound signal receiving.
- Doubles the volume of signals received over traditional methods, increasing image resolution and generating more accurate images.
- Produces higher frame rates, ensuring better diagnostic confidence and efficiency, especially for moving organs.



Traditional Dual Beam

Quad Beam

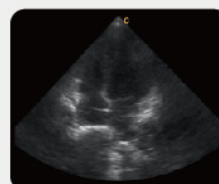
## • Full display Mode

- Full-screen mode without losing image resolution.
- Provide you more details for more accurate diagnosis.
- Monitor, 15"/19"



## • FHI

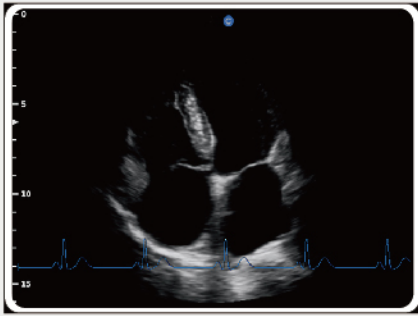
- FHI is an innovative harmonic imaging technology that uses multiple transmission and receiving methods based on the patients' size and weight. This allows the QBit to maintain image resolution when imaging larger patients.
- Traditional Tissue Harmonics and Phased Harmonics compromise image quality and resolution when penetration is increased.
- Chison's FHI technology greatly improves diagnostic abilities and clinical confidence in larger, difficult-to-image patients.



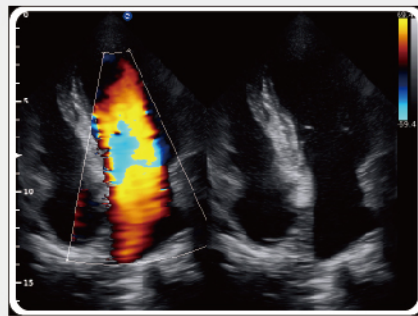
FHI OFF



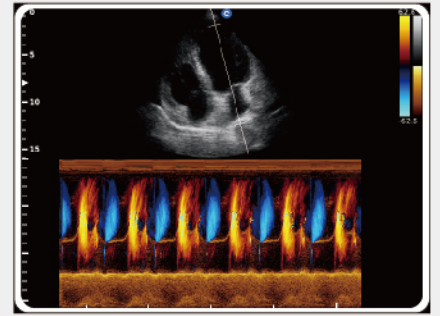
FHI ON



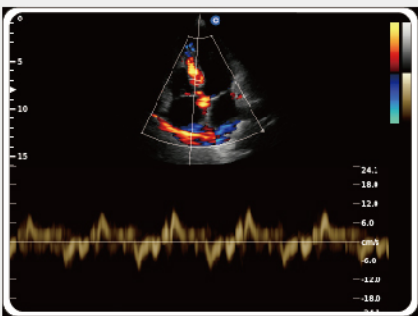
Four Chambers View, ECG



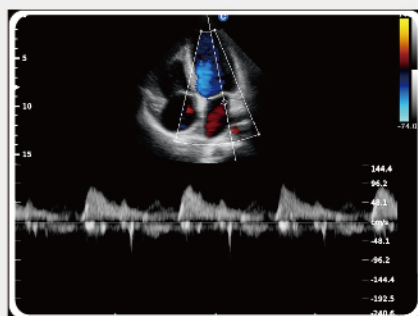
Four Chambers View, B/BC Mode



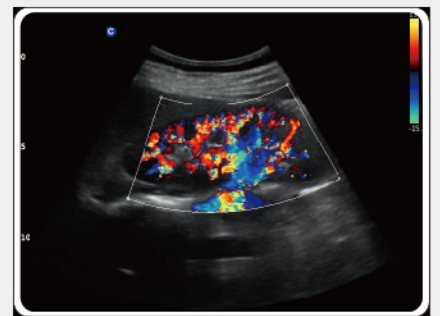
Four Chambers View, Color M Mode



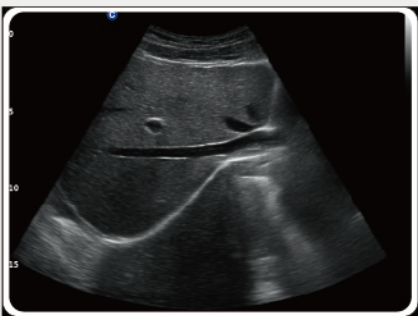
Four Chambers View, TDI Mode



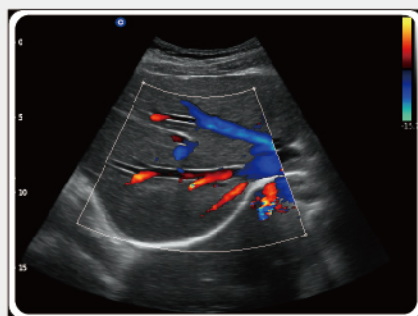
Cardiac, CW Mode



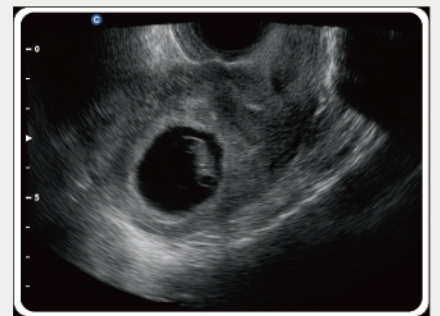
Kidney, C Mode



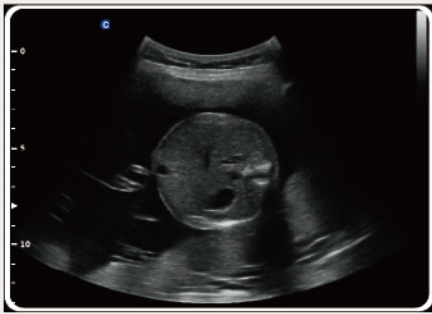
Hepatic Vein, B Mode



Hepatic Vein, C Mode



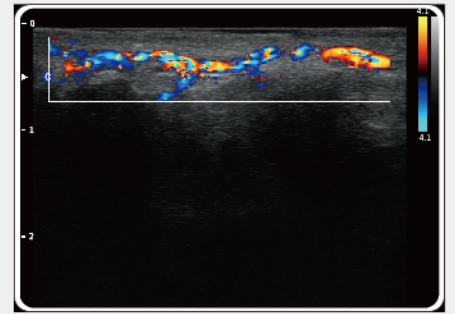
Gestational Sac, B Mode



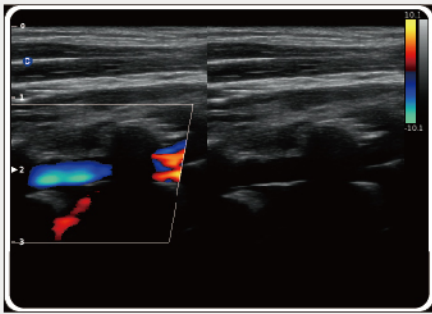
Fetal Abdomen, B Mode



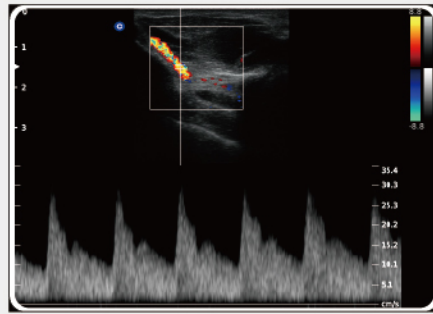
Umbilical Cord, B Mode



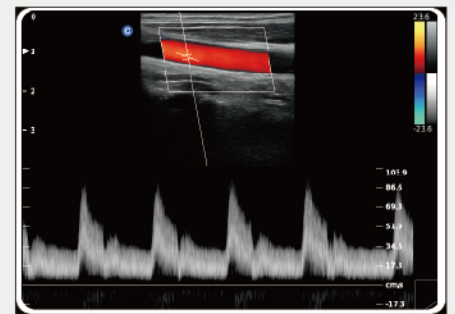
Fingertip Vessel, C Mode



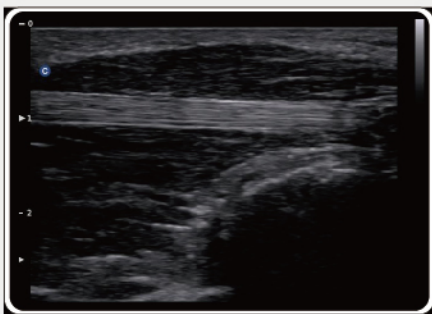
Vertebral Vessel, B/BC Mode



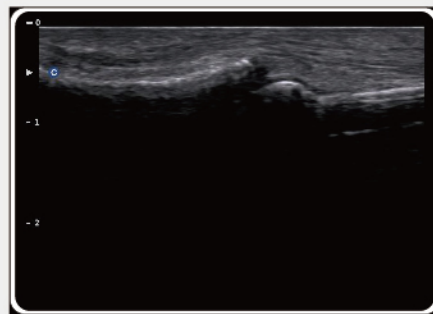
MSK, PW Mode



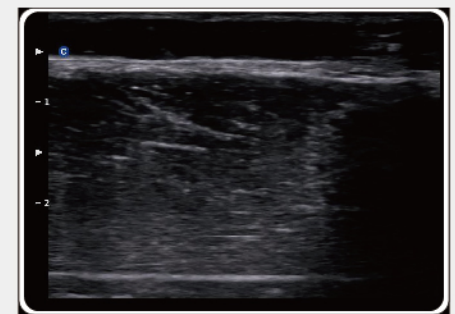
Carotid, Triplex Mode



Flexor Tendon, Longitudinal View



Interphalangeal Tendon, B Mode



Radial Vein Valve

# • Specifications •

## Professional Clinical Applications

- . ABD
- . OB / GYN
- . Vascular
- . MSK
- . Small Parts
- . Urology
- . Pediatrics

## Image Processing Technologies

- . Speckle Reduction Algorithm (SRA)
- . Compound Image
- . Q-image
- . Q-flow
- . X-contrast
- . Q-beam
- . FHI

## Imaging Modes & Features

- . B, 2B, 4B, B/M, M
- . CFM, B/BC
- . PW, CW, Color M, TDI, ECG (option)
- . PD, Directional PD
- . Duplex, Triplex
- . Trapezoidal Image Mode
- . 2D Steer
- . Chroma B/M/PW
- . HIP graf
- . Full screen
- . Super Needle (option)
- . Auto IMT (option)
- . DICOM
- . HD 3D (free hand 3D)



2.0 - 6.8 MHz Convex  
D3C60L



4.0 - 15.0 MHz Linear  
D7L40L



7.0-18.0 MHz (With FHI) Linear  
D12L40L



4.0 - 12.0 MHz Transvaginal  
D6C12L



4.0 - 15.0 MHz Transvaginal  
D7C10L



4.0 - 15.0 MHz Trans-Rectal  
D7L40L-REC



2.0 - 6.8 MHz Micro-Convex  
D3C20L



4.0 - 10.7 MHz Micro-Convex  
D5C20L



4.0 - 12.0 MHz Micro-Convex  
D6C15L



1.5 - 5.3 MHz Phased array  
D3P64L

## CHISON Medical Technologies Co., Ltd.

### Sales & Service Contact Address:

No.9, Xinhuihuan Road, Xinwu District, Wuxi, Jiangsu, China 214028

TEL : 0086-510-85310937

FAX : 0086-510-85310726

EMAIL : export@chison.com.cn

We reserve the right to make changes to this catalogue without prior notice  
Please contact our local dealer for the latest information.

QBit5-20190617